



THE LEAF
NAGARKOT

TERRACE VILLA



Terrace Villa

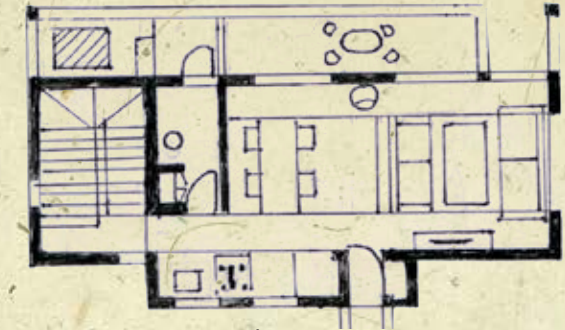
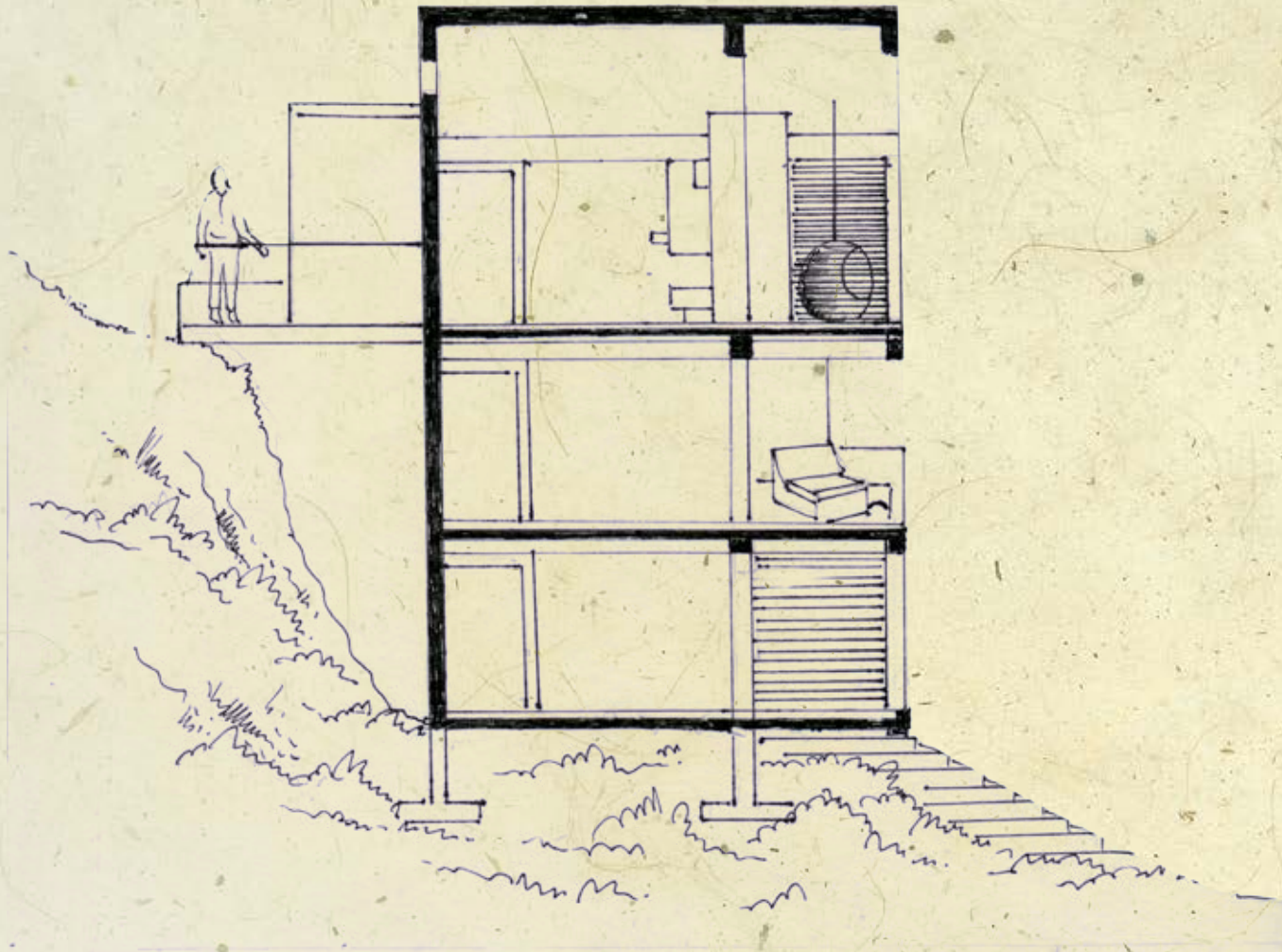
A Boutique version of Sky Villa, this 1545 SF residence is an exclusive one bed-room property. The magnanimous living room space on the entry level perfectly captures the views and the bedroom on the ground level opens up to gardens and private cabana - making the overall experience intimate and romantic.

Plot Area: 0-7-0-3.2 to 0-9-1-3.5
Super built-up: 1545 SF
2BHK
Street Side Parking

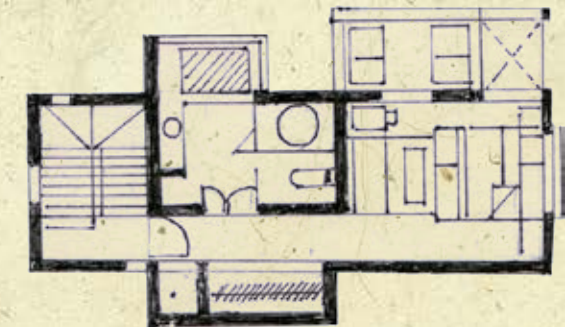




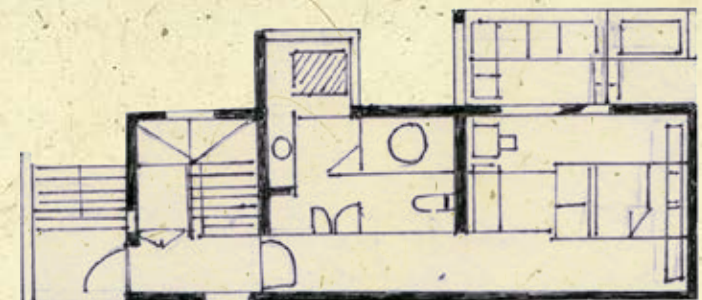
Plans & Sections



G+2 Level
Built-up: 790 SF



G+1 Level
Built-up: 657 SF



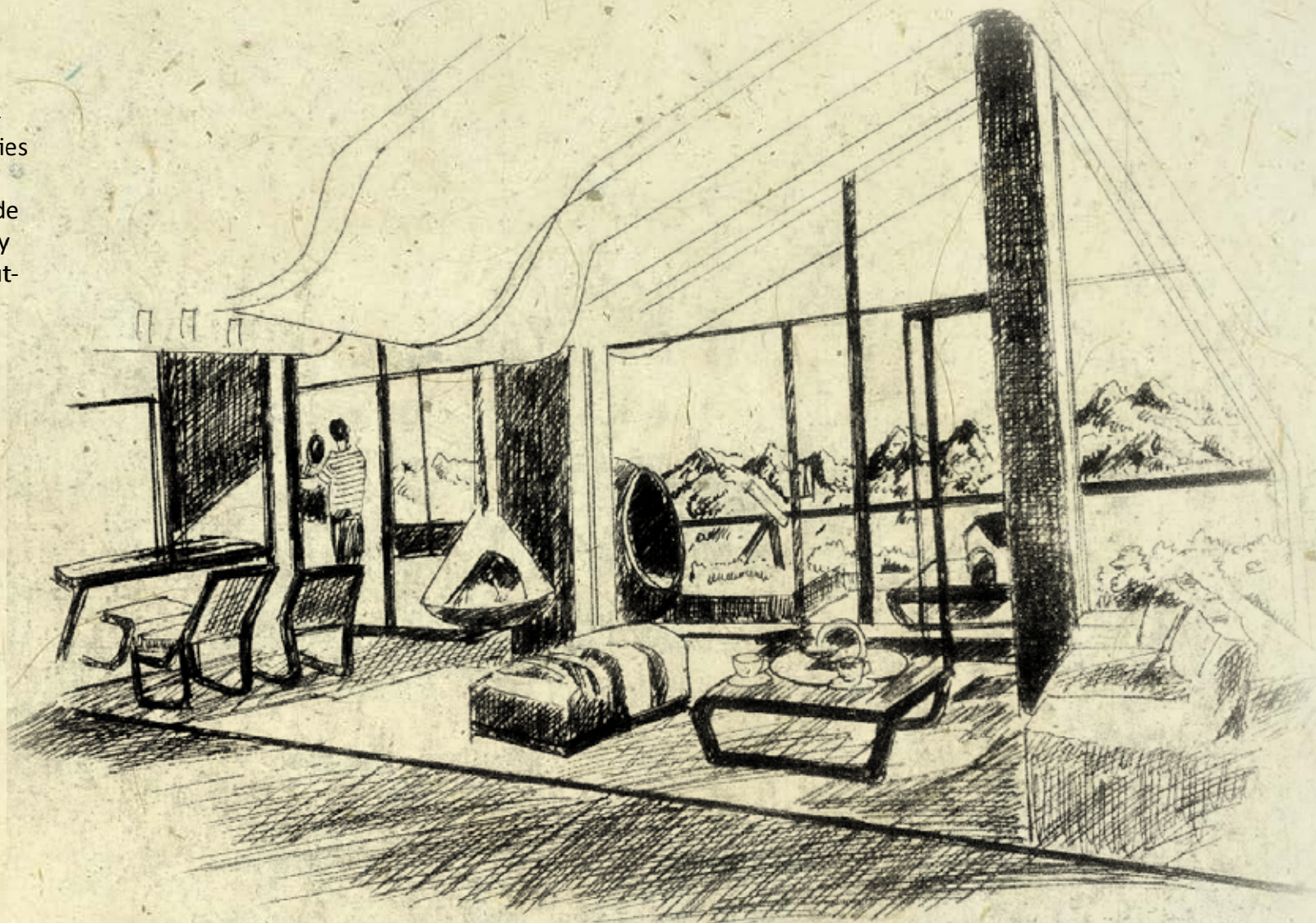
Ground Level
Built-up: 621 SF



Living Floor

Inspired by the mountain forms, the walls and ceiling come together to create a signature space. Fully transparent on one side, the room magnifies the views from each area defined by the custom designed fireplace. A wide sky terrace canPlevers out F naturally extending the living floor into the outdoors.

Living Dining Area = 25.8 m. X 11 m.
Balcony Area = 34 m X 6.5 m.



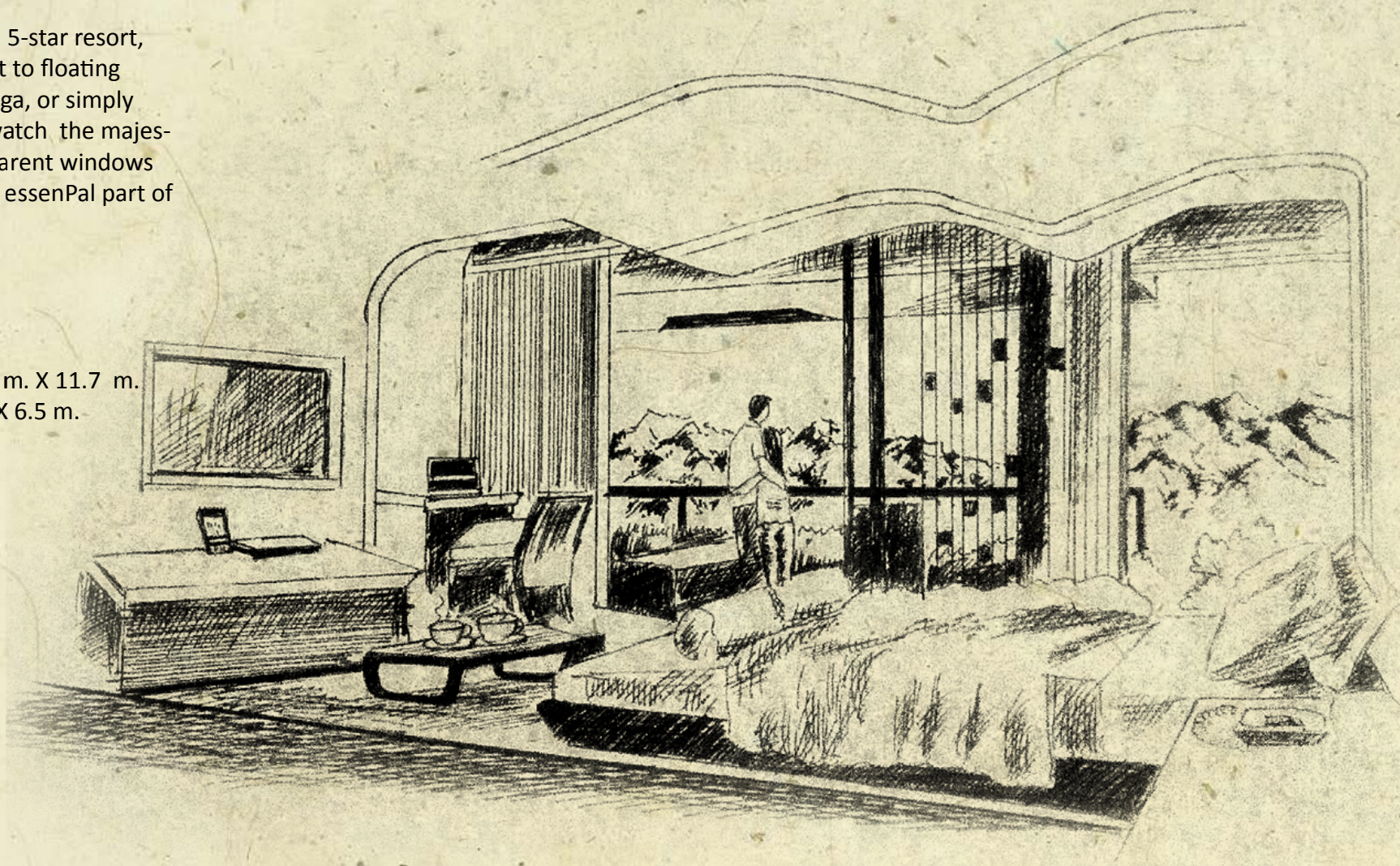


Bedroom

Designed as a room in a 5-star resort, the bedrooms open out to floating verandas perfect for yoga, or simply reclining on a chair to watch the majesty of the nature. Transparent windows make the mountains an essential part of the interior.

Bed Room Area = 17.3 m. X 11.7 m.

Balcony Area = 14 m X 6.5 m.

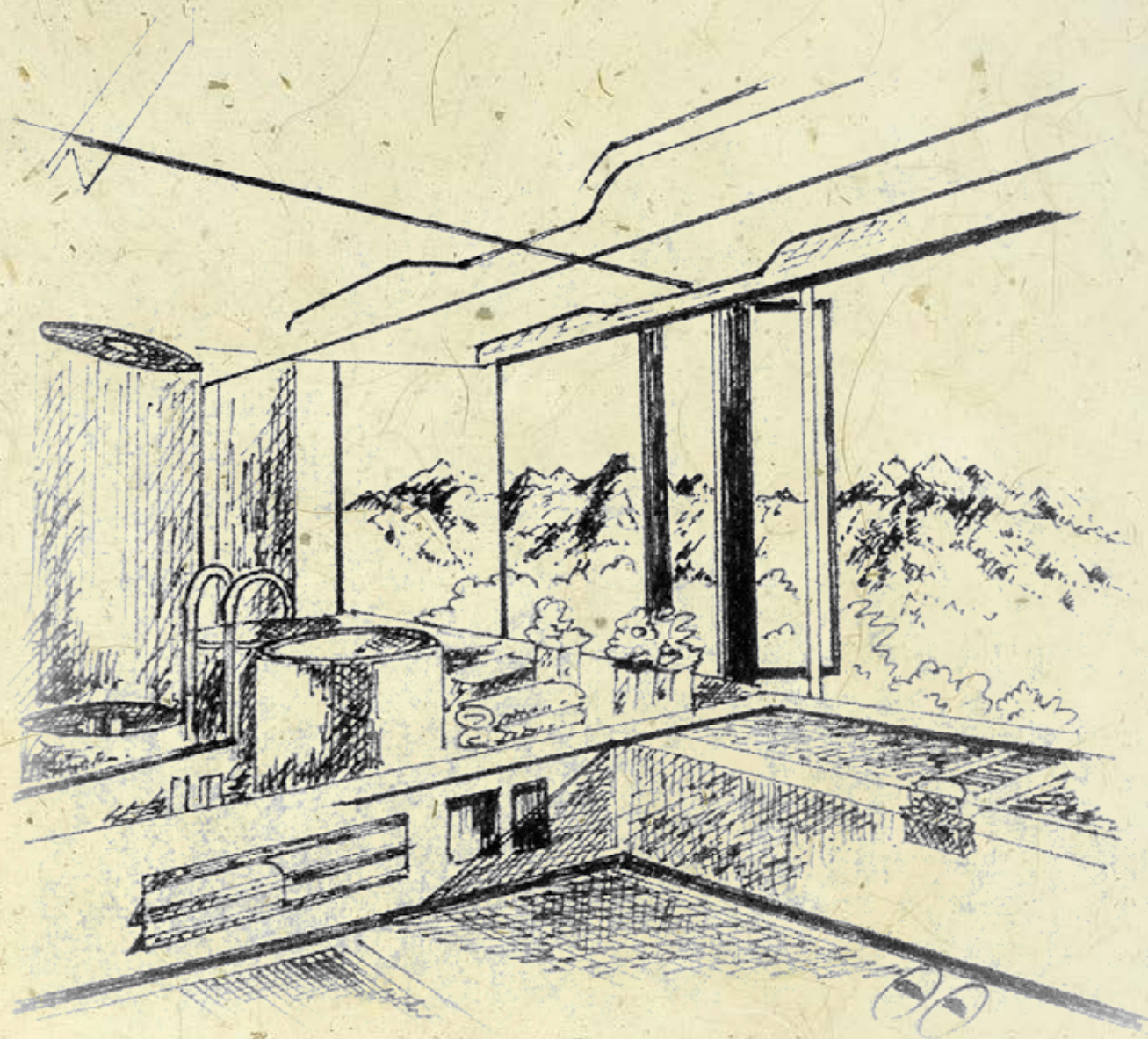




Bathroom

A four-fixture bathroom redefines the indoor bathing experience. The combination of expansive windows and wall to wall mirror, give the space an outdoor feel with the mountains experienced from every corner.

Bath Room Area = 12 m. X 11.5 m.





THANK YOU