



THE LEAF  
NAGARKOT

SKY VILLA





## Sky Villa

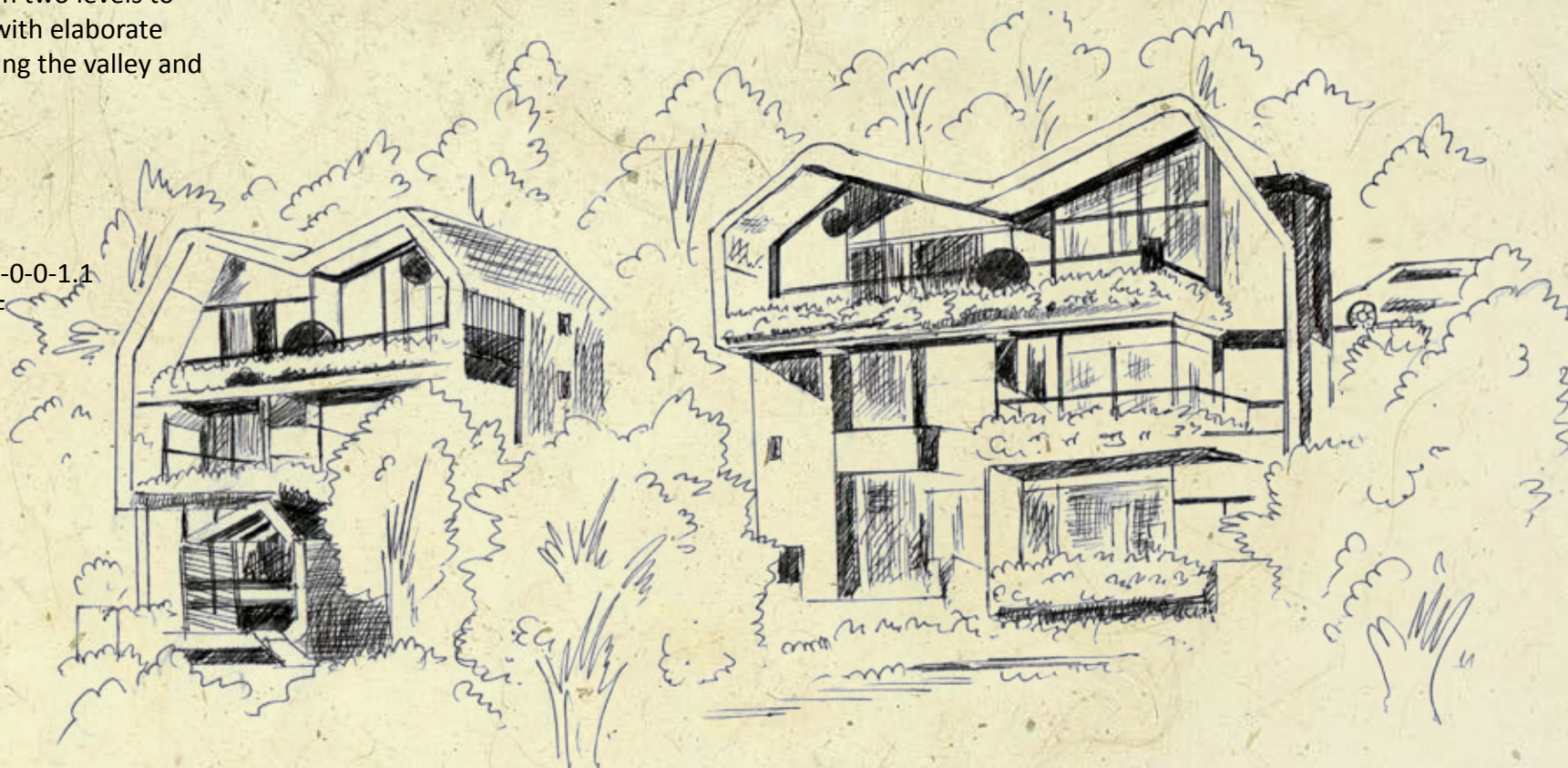
Elevated on the slopes, the 2,164SF villa is entered on its top level. The living space with its glorious ceiling height opens up to breathtaking views. The verandas extend out from the interior space giving a sense of being suspended in the sky. Walk down two levels to grand bedrooms fitted with elaborate vanity rooms, each facing the valley and the Himalayas.

Plot Area: 0-11-2-0 to 1-0-0-1.1

Super Built-up: 2164 SF

2BHK

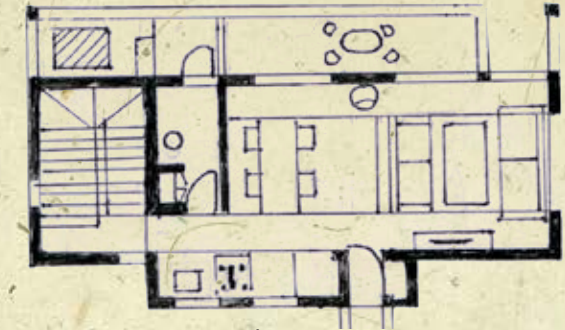
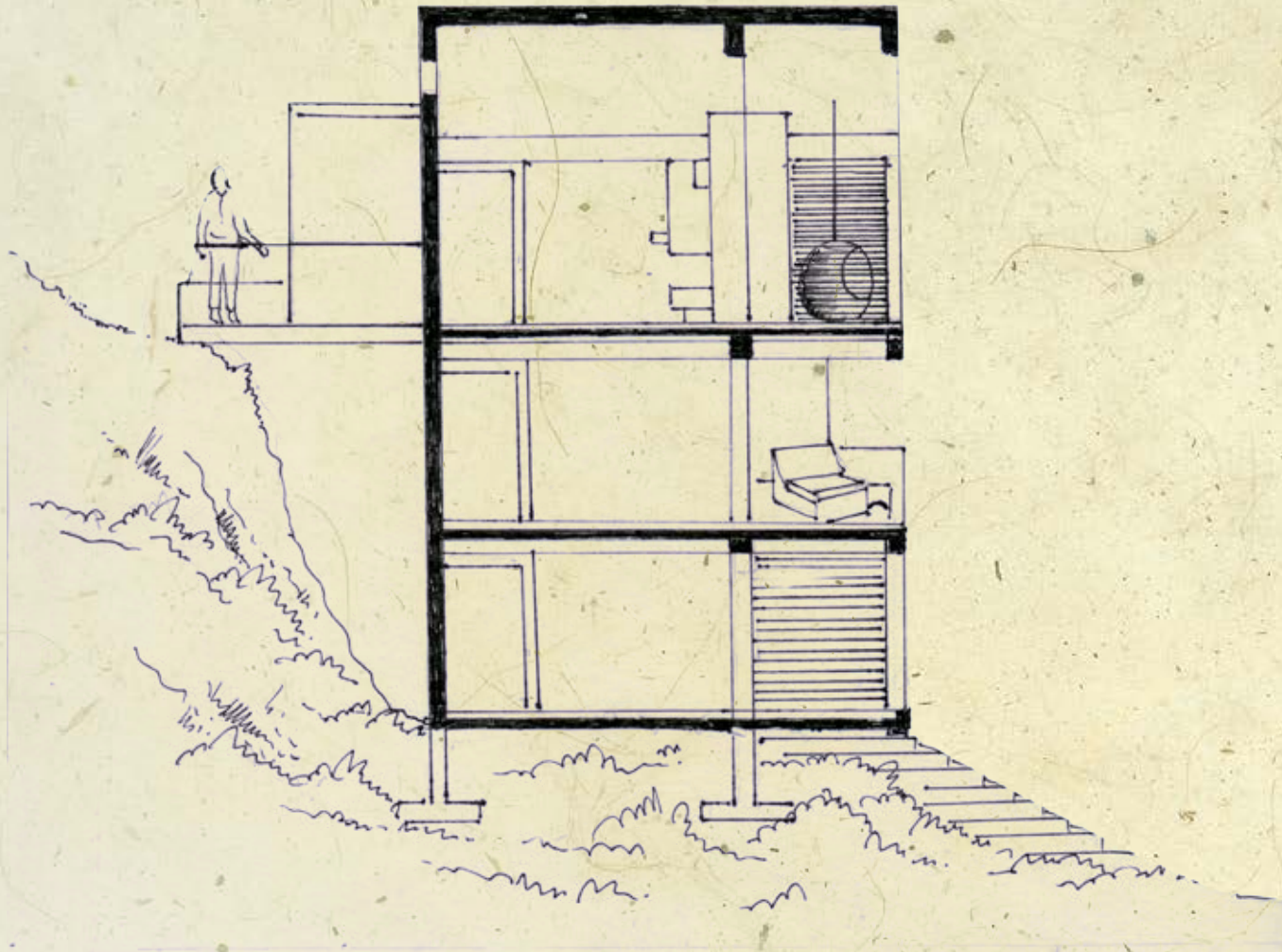
Street Side Parking



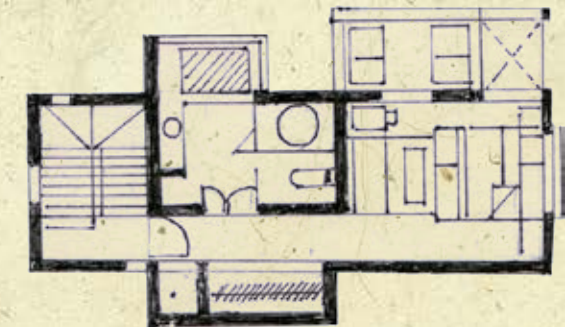




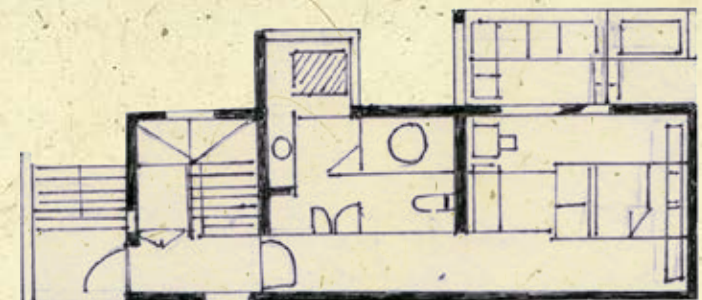
## Plans & Sections



G+2 Level  
Built-up: 790 SF



G+1 Level  
Built-up: 657 SF



Ground Level  
Built-up: 621 SF



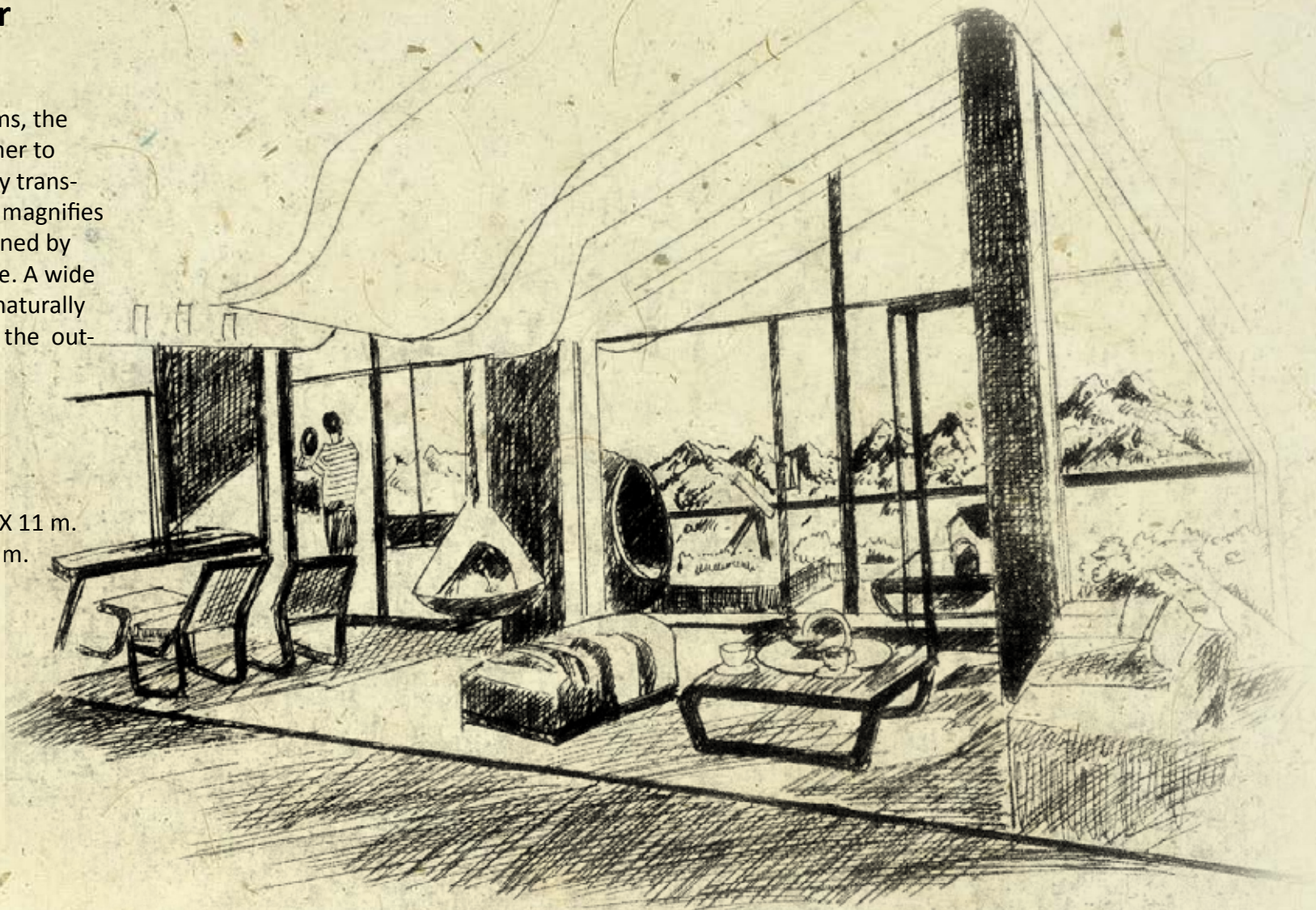


## Living Floor

Inspired by the mountain forms, the walls and ceiling come together to create a signature space. Fully transparent on one side, the room magnifies the views from each area defined by the custom designed fireplace. A wide sky terrace can be viewed naturally extending the living floor into the outdoors.

Living Dining Area = 25.8 m. X 11 m.

Balcony Area = 34 m X 6.5 m.





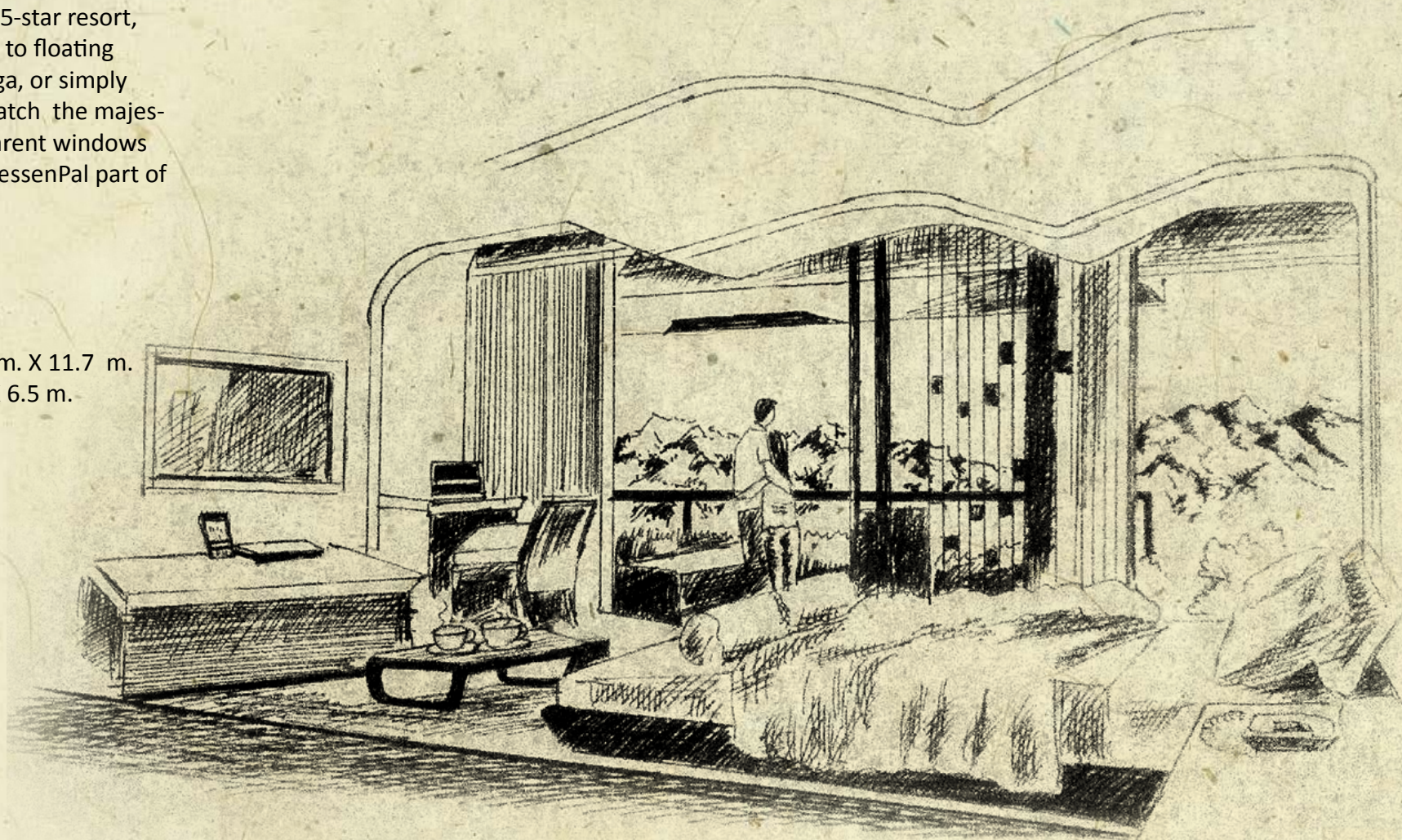


## Bedroom

Designed as a room in a 5-star resort, the bedrooms open out to floating verandas perfect for yoga, or simply reclining on a chair to watch the majesty of the nature. Transparent windows make the mountains an essential part of the interior.

Bed Room Area = 17.3 m. X 11.7 m.

Balcony Area = 14 m X 6.5 m.



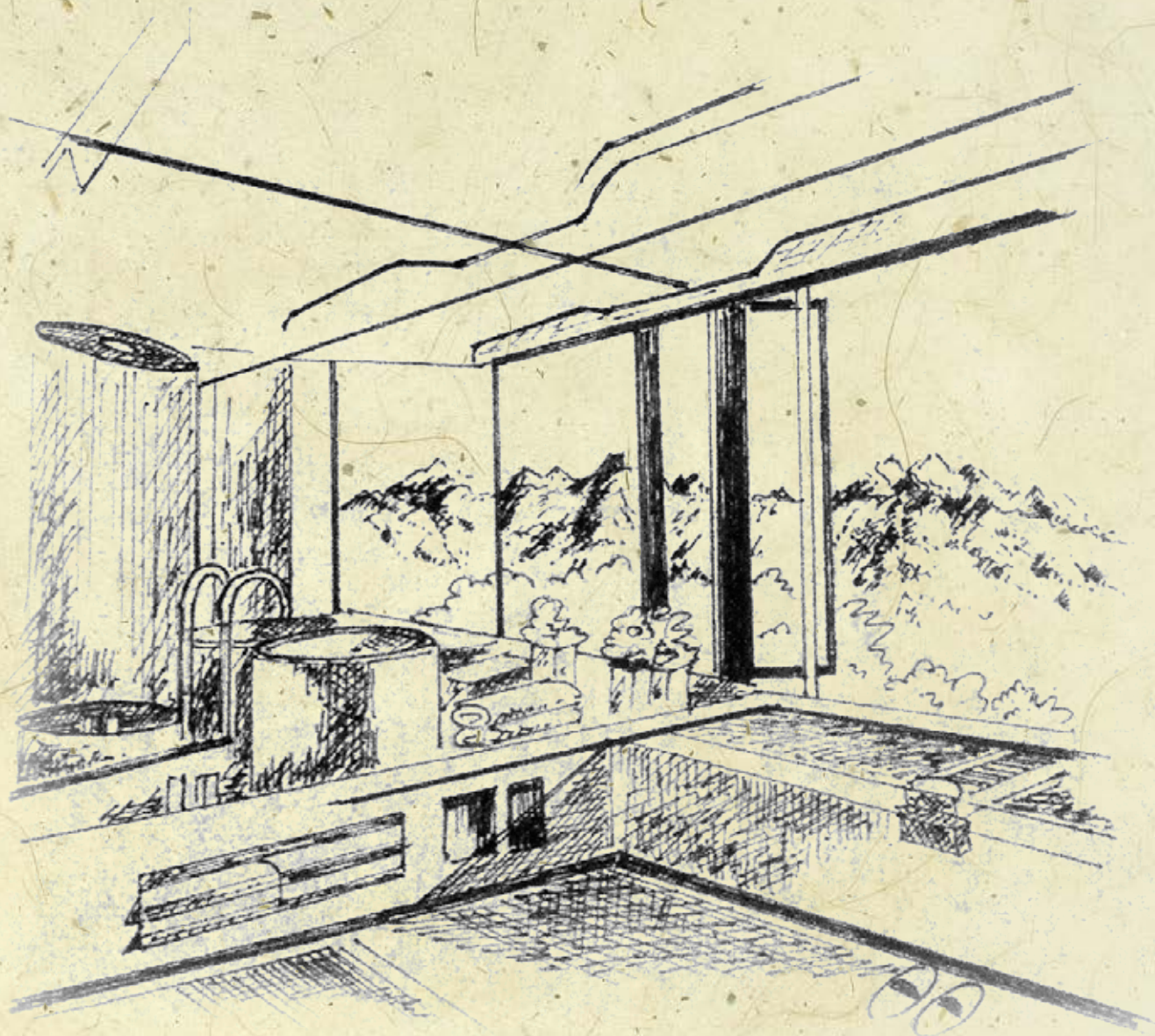




## Bathroom

A four-fixture bathroom redefines the indoor bathing experience. The combination of expansive windows and wall to wall mirror, give the space an outdoor feel with the mountains experienced from every corner.

Bath Room Area = 12 m. X 11.5 m.







**THANK YOU**