



THE LEAF

NAGARKOT

FOREST VILLA



Forest Villa

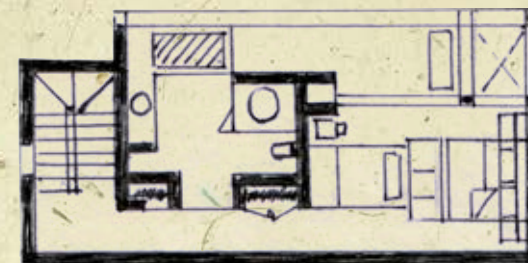
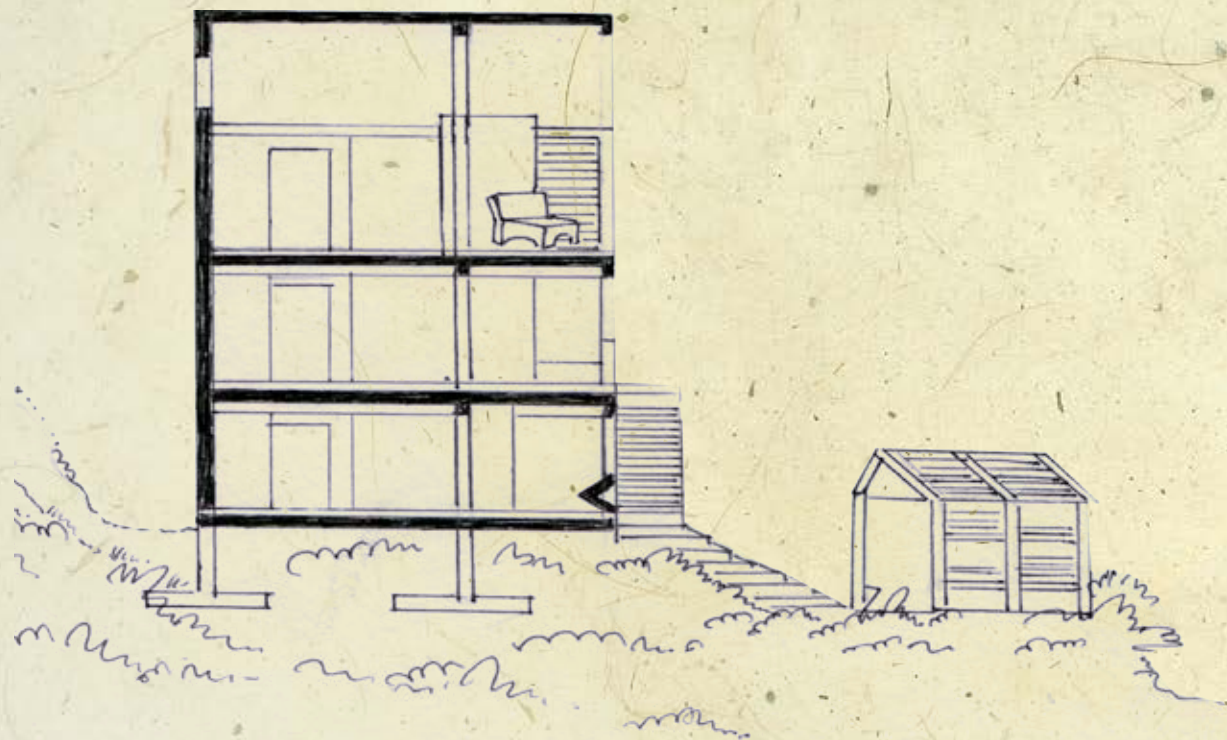
Cascading steps connect the driveway and the villa via a naturally landscaped front yard. Expansive patio necklaces the living floor, while the hanging verandas decorate the luxurious bedrooms placed on upper levels.

Plot Area: 0-9-3-2 to 0-10-1-0.5
Super Built-up: 2504 SF
2BHK
Street Side Parking

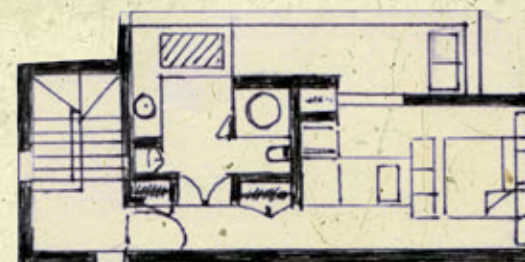




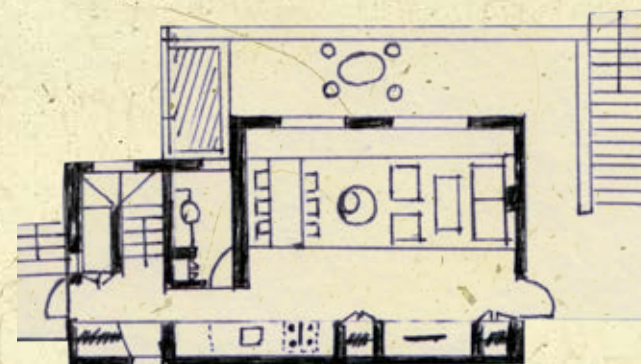
Plans & Sections



G+2 Level
Built-up: 704 SF



G+1 Level
Built-up: 770 SF



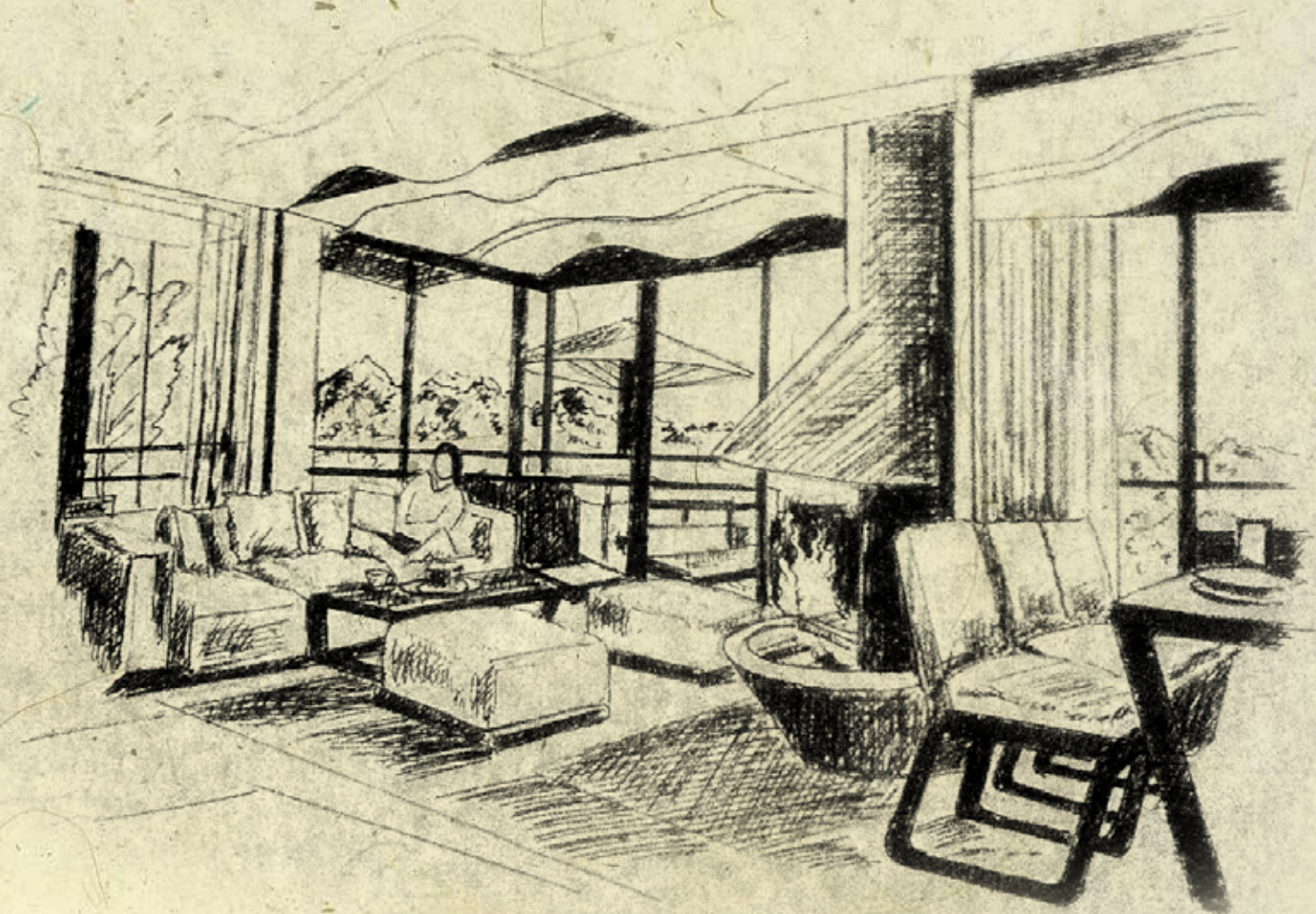
Ground Level
Built-up: 941 SF



Living Floor

Tucked into the forest and with 2,504SF of area, this is the most premium villa offered at the LEAF. The floor to ceiling and wall to wall windows blurs the distinction between inside and outside where the patio becomes a natural extension of the living space inside. The sculptural fireplace and wavelike ceilings define a unique decor with picture-perfect views setting the mood.

Living Dining Area = 21.3 m. X 15.4 m.
Deck Area = 32 m X 6.5 m.



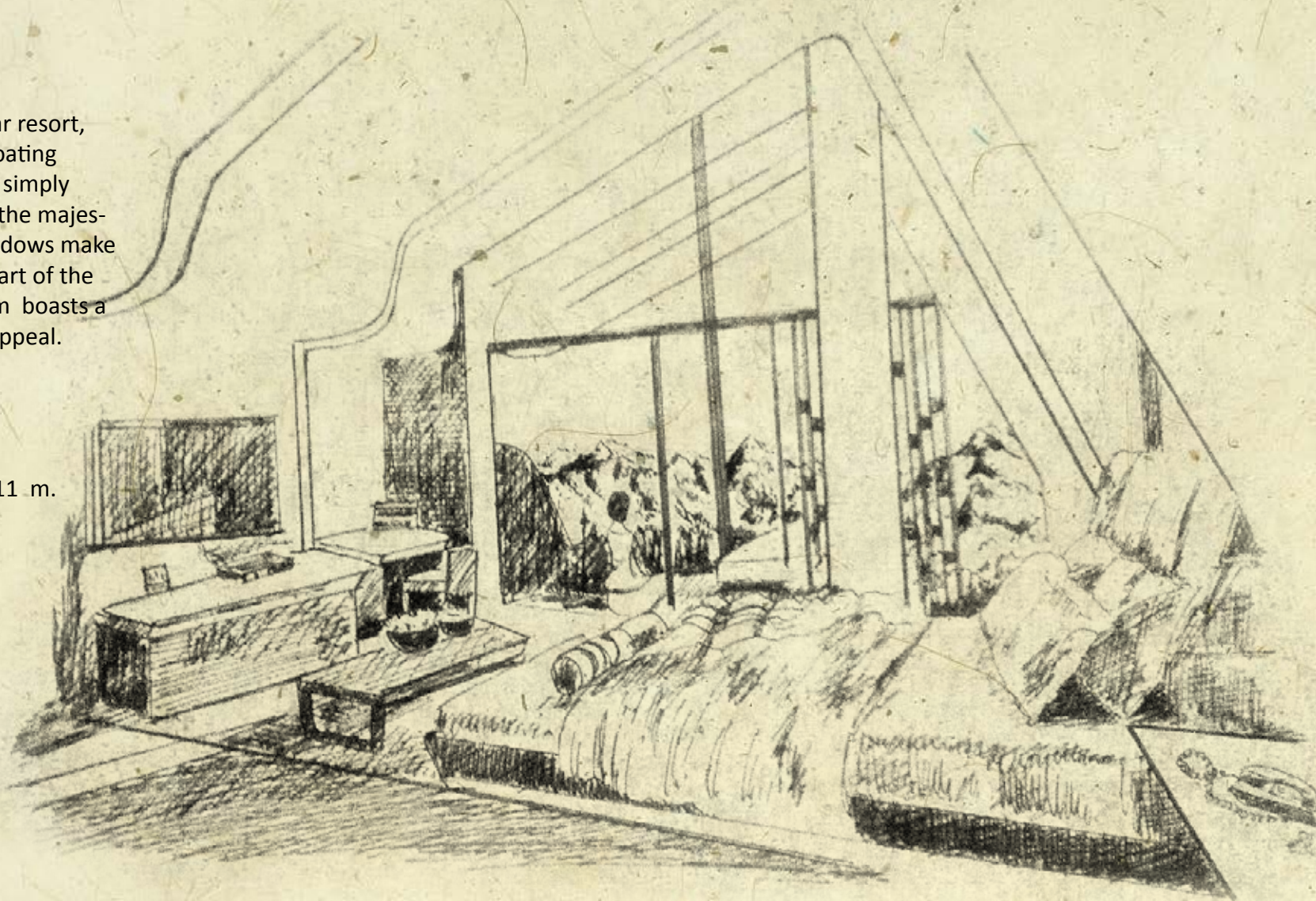


Bedroom

Designed as a room in a 5-star resort, the bedrooms open out to floating verandas perfect for yoga, or simply reclining on a chair to watch the majesty of nature. Transparent windows make the mountains an essential part of the interiors. The master bedroom boasts a lofty ceiling, giving it a royal appeal.

Bed Room Area = 17.3 m. X 11 m.

Balcony Area = 27 m X 6.5 m

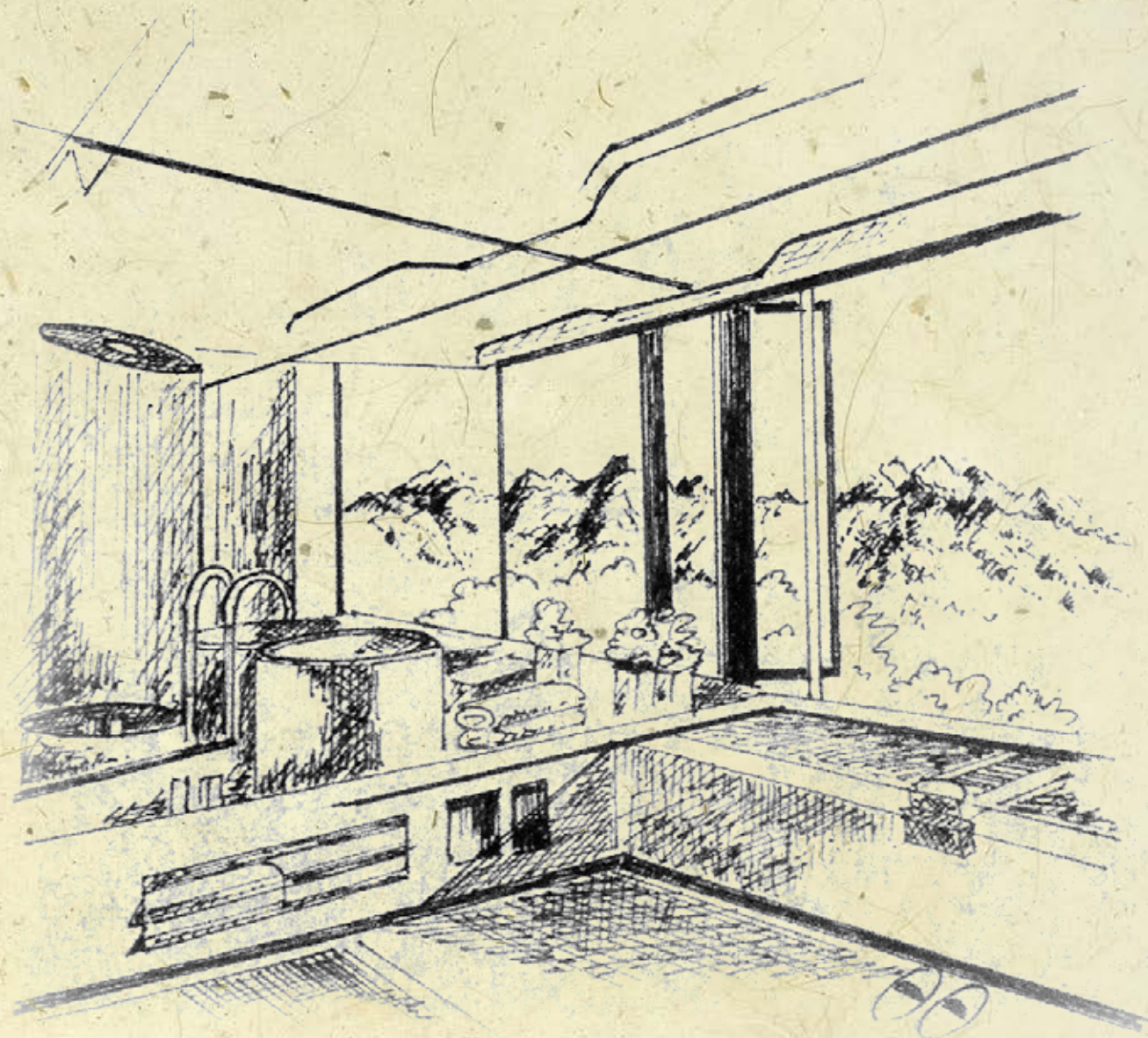




Bathroom

A four-fixture bathroom redefines the indoor bathing experience. The combination of expansive windows and wall to wall mirror, give the space an outdoor feel with the mountains experienced from every corner.

Bath Room Area = 12 m. X 11.5 m.





THANK YOU